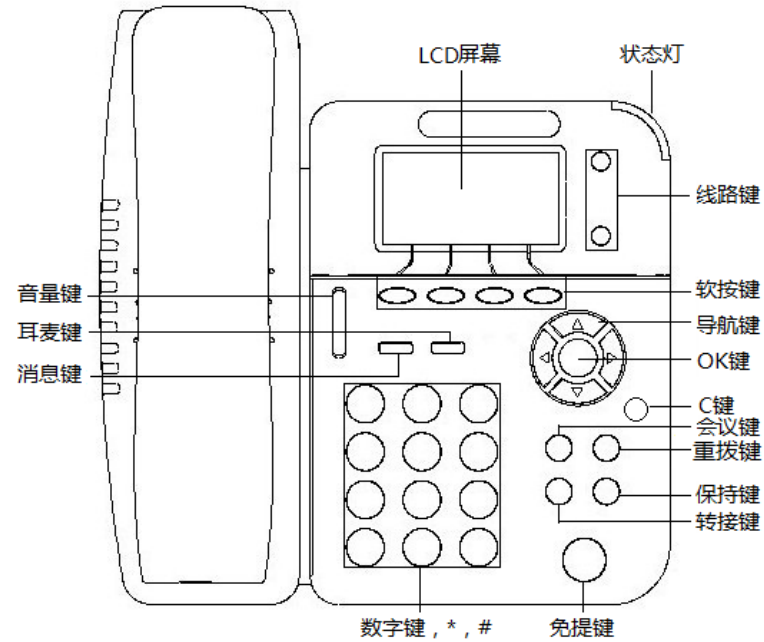


# ES29X 桌面型话机快速操作指南



## LEDs

● 表 1 状态灯

LED 灯状态	描述
红色闪烁	某线路有来电正在呼入及线路被保持
红色常亮	某线路摘机且正在进入正常通话状态

● 表 2 线路键状态

LED 灯状态	描述
红色闪烁	对应线路来电
绿色常亮	对应线路通话中
绿色闪烁	对应线路保持中
无亮灯	对应线路空闲状态

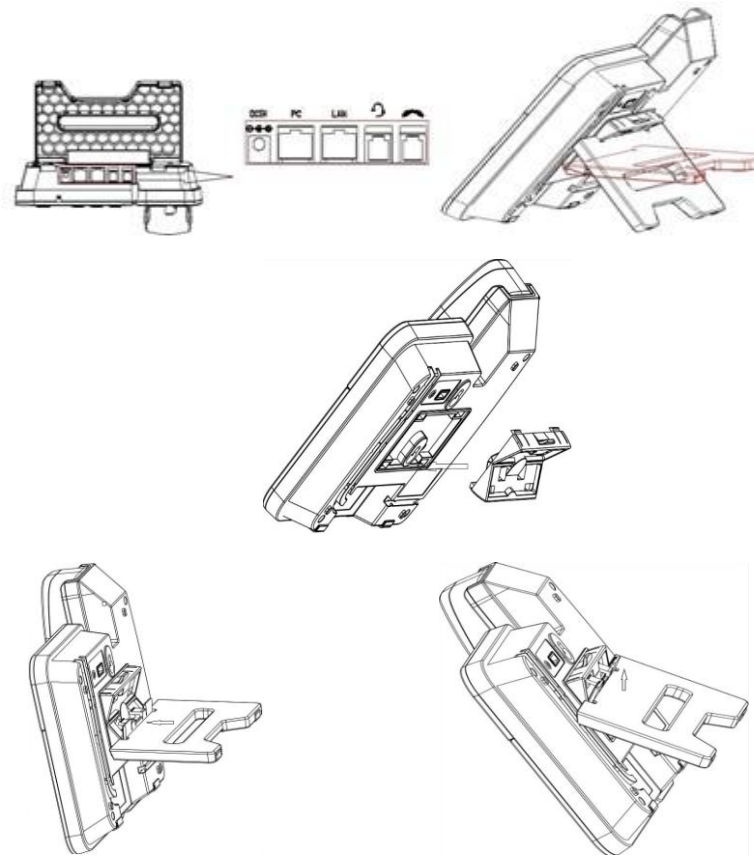
● 表 3 其他处于红色状态

对应键	描述
耳麦、消息、免提	对应功能正启用

## 配件清单

列表	数量
话机	1
手柄	1
网线	1
快速操作指南	1
支架	1

## 安装支架



安装支架板后再安装一级支架，按照箭头的方向将支架的卡扣对准支架板下面两个卡口后手托住支架向上轻轻推一下即可。（如上左图）

另一级支架按照箭头的方向，手托住支架将其卡扣对准支架板上面的两个卡口，手向上轻轻推一下即可；拆下时，手向下轻轻一拉即可。（如上右图）

- PC 口接电脑，LAN 口接外网，DC5V 接电源，接 RJ11 耳麦，接话机手柄。

## 网络设置

- 步骤为：按话机上软按键菜单(或 OK) => 系统设置 => 高级设置 => 输入高级设置密码（默认为空） => 网络 => LAN 口 => 网络类型（DHCP/静态 IP/PPPoE） => 进入 => 保存 => 确定（重启生效）。  
有以下选项：静态 IP、拨号 PPPoE、DHCP 自动获取  
选择静态 IP 后按导航键-下，看到 IP 地址设置，可对 IP 及网关等网络信息进行设置，其中“.”请用键“\*”输入，修改完后确定。  
选择 PPPoE 输入账号和密码后按保存=>确定（重启生效）。  
选择 DHCP 不用设置 IP。

## 注册帐号

- 按话机上的菜单键菜单(或 OK) => 系统设置 => 高级设置 => 输入高级设置密码（默认为空） => Sip 帐号 => 账号 X (X-1, 2)，之后分别配置以下帐号参数：帐号激活状态、标签、显示名、认证用户名、注册名、密码、SIP 服务器等
- 主 SIP 域名：输入 SIP 服务器 IP（“.”请用键\*输入，注意 IP 话机与 SIP 服务器间网络必须可达），之后选取“保存”，即可完成 SIP 帐户的添加。

## 发起呼叫

您可以摘机或按下耳麦键或免提键来进行一个呼叫。

- 直接呼叫：按下免提、耳麦键或者摘下手柄直接拨打号码，然后按#键或按发出软键；
- 重拨：按重拨键以列出所有“已拨号码”，可以有选择的拨打您需要拨出的号码；
- 从呼叫记录进行呼叫：直接按“话单”或者“上导航键”，调出“全部记录”再按右导航键选择“未接号码”、“已接号码”或“已拨号码”或者“前转来电”列表来选择一个号码，也可以按各导航键（左、右、下）分别调出已拨、已接、未接“再按“拨号”软键进行呼叫。

## 呼叫转移

实现来电前转：前转，通话转移：咨询转

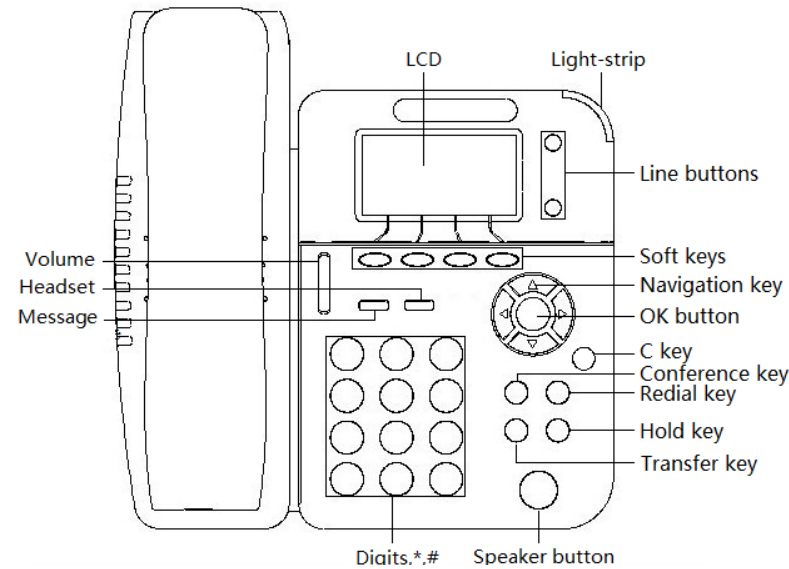
- 来电前转：在来电时，按下前转同时拨出需要转移的目的号码，本机直接挂机，注：本机不管转移的号码在不在线；
- 咨询转：在通话中按下“转移”键，听到拨号音，此时拨打需要转移的目的号码，等待对方振铃并接听起来话后再按“转移”键可实现转移。

\*更多的详细内容以及话机配置信息请参考本话机的用户手册。您也可以访问话机的 Web 页面来进行更详细的参数配置，在话机空闲时，按 C 键查看话机的 IP 地址，在电脑的浏览器中输入 IP 话机的地址，输入话机的用户名、密码（默认均为 root），即可进入了 IP 话机的网页配置界面。



广州市亿景通信技术有限公司  
地址：广州市天河区东圃镇黄村路 51 号粤安工业园 C 栋 4 楼  
网址：http://www.escene.cn  
客户服务：400 090 5818

# ES29X DeskPhone Quick User Guide



## LEDs

### Table 1 Light-strip

LED Status	Description
Red, flashing	There is an incoming call or to be hold
Red, steady	Hook-off or on-going conversation

### Table 2 Line Buttons

LED Status	Description
Green, steady	Talking with someone
Red, flashing	Someone was calling the line
Green, flashing	The line was on hold
Dark	Accounts was idle

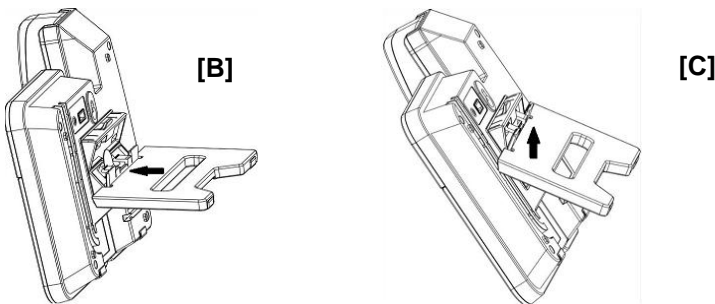
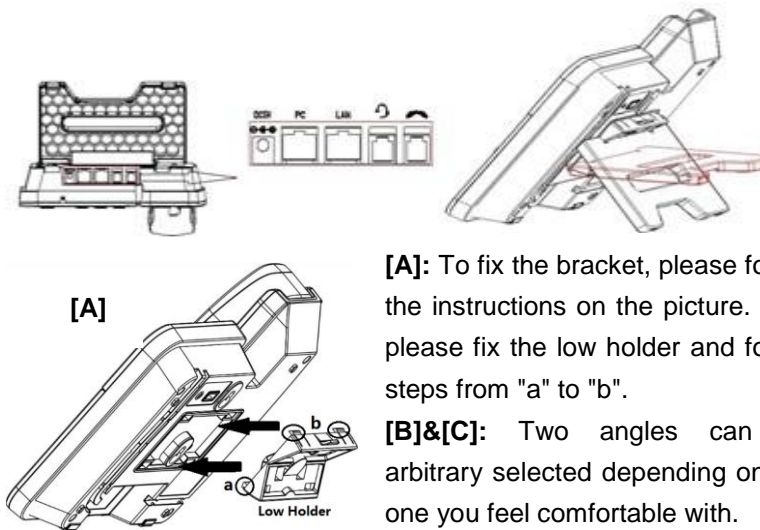
### Table 3 Others in REDs

Buttons	Description
Headset, Mute, Speaker	The corresponding function is enabled.

## List Of Items

Name	Amount
IP Phone	1
Handset	1
Network	1
Quick User Guide	1
Holder	1

## Mounting Bracket



- PC Port for Computer connection, LAN Port for Internet connection, DC5V connected power adapter, connected headset, connected handset.

## Network Settings

- Steps: Press the menu button on the phone **MENU=> System setting=> Advanced setting=>Enter Advanced Password** (Empty by default) by pressing **OK => Network => click OK** Type has the following options : **STATIC**、**PPPoE**、**DHCP** Choose **STATIC** press Navigation key - to the next, see the IP address settings, the IP and gateway settings and other related network information, including "." Use the key "\*" entry. Select **PPPoE** username and password to register. Select **DHCP** needn't to setting IP.  
NOTE: when changes are applied on network settings, the phone needs then to reboot to take them into account.

## Registered Account

- On the idle screen, you can start to configure the set by pressing **MENU** button => **System Setting => Advanced Setting=>type Advanced password** (it is idle by default) and press **OK** button=> **SIP Account**, the main parameters for 2 SIP accounts are needed to be set as follow:  
**Enable Account:** Select Enable  
**Account:** Type your SIP account  
**Authn User:** The authentication with the account  
**User Pwd:** Type your SIP password  
**SIP Server:** Type the SIP server IP address (you can type "." by "\*" button, you must confirm the connection between the phone and SIP server), And then select Submit changes and press **OK** button to submit the changes.

## Placing a Call

You can pick up the handset or press **Headset/Speaker** button to place a call.

- Dial directly:** Dial number directly, then press # button or Send soft-key (it will call from the first available line);
- Redial:** Press **Redial** button/soft-key to dial the latest number;
- Dial from Call history:** Press **Menu** button, select "Call history" and select one of "Missed calls", "Received calls" and "Dialed numbers" lists to dial by pressing **Dial** soft-key.

You can open Call history in standby status of phone by pressing corresponding Navigation-buttons, for example , **Left** button : "Received Calls" list ; **Right** button : "Dialed Numbers" list ; **Down** button : "Missed Calls" list . **UP** button : "tone volume" ; "**OK**" button to confirm the key ; next to the "**C**" key for the Cancel button.

**\*This document introduces normal function operation of IP phones only. For details (operation and configuration), refer to User Manual. And set details on the web page of phone. In the browser, input the IP phone's address and the phone's user name and password (default is root), and then login into the IP phone's web configuration interface.**



EScene COMMUNICATION CO.,LTD.

Web: <http://www.escene.cn/en>

Address: Floor 4 Building C YueAn Industrial Park No.51 Huangcun Road Tianhe District Guangzhou China